

Thank you Mrs Waterhouse

Elizabeth Waterhouse (1834-1918) gets a brief mention at the end of *The Artist* article (1899) “Some Beautiful English Pottery” on Wileman’s ranges: “Designs have also been supplied by Mrs. Waterhouse” (and a list of others).

Born as daughter of John Hodgkin, she became the wife of the architect Alfred Waterhouse (1830-1905), whose buildings include the Natural History Museum in London. Figure 1 is her at the National Portrait Gallery

They lived in Yattendon, Berkshire and were noted for a particular decoration in brass. She ran a village workshop where she designed and others learned how to create the effect (example figure 2 from *The Studio*, July 1899).

Contribution to Wileman

A shape of vase that ended up being made in six sizes (6 inch to 24 inch) and being used in Urbato (five patterns on four sizes) and Intarsio (eight patterns on six sizes). 18 illustrations follow.

Here is their version of that shape Did she only provide a shape? Or patterns as well? Compare the second Yattendon example (figure 3) with the pattern for Urbato 1057 (figure 4)

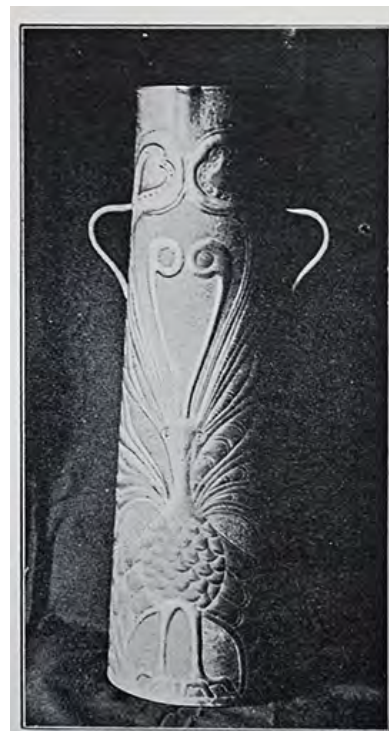


1



VASE
DESIGNED BY
MRS. WATERHOUSE
EXECUTED BY
HARRY SMITH
Yattendon Class

2



Copper Vase. Yattendon.

3



4

scale 1/4



56 14inch



(1056 Urbato)



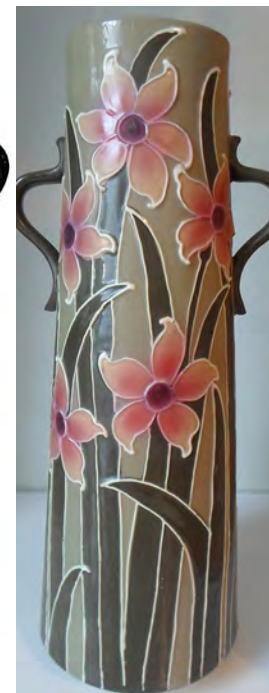
3056 Intarsio



(3323 Intarsio)



4056 Urbato



4056 Urbato



Faience npn



57 11inch



1057 Urbato



3057 Intarsio



npn Intarsio



4057A Urbato



4057B Urbato



63 8inch



(3063 Intarsio) (1063 Urbato) 7336 Delphic green



86 18inch



3086 Intarsio
1086 Urbato no image



95

24inch



3095 Intarsio
1095 Urbato no image



111 6inch

And the final, smallest version
actually carried her name in
the Shape Book



3111 Intarsio 3111B Intarsio



3549 Intarsio



Faience
Windmills and Boats

